



18 Rossetti Road, London, SE16 3EZ

Guide Price £300,000 to £325,000. A modern two bedroom apartment located in a tranquil residential Bermondsey cul-de-sac. The property boasts a generous living room, a well kept kitchen, a neutrally decorated bathroom and two double bedrooms with plenty of storage space. Additional storage can be found in the hallway cupboard. South Bermondsey Station for a 5 minute commute to London Bridge is just round the corner as well as a plethora of local amenities. The development is on a cycle quietway.

-Years left on the lease: 95
 - Ground Rent: £186.64
 -Service Charge: £1663.50

Council tax and, where applicable, lease information, service charges and ground rent are given as a guide only and should always be checked and confirmed by your Solicitor prior to exchange of contracts.

- Chain Free
- Plenty of Storage Space
- Excellent Transport Links
- Resident Off-Street Parking
- Generous living room
- A Walk Away From A Plethora Of Local Amenities
- Tranquil Residential Area

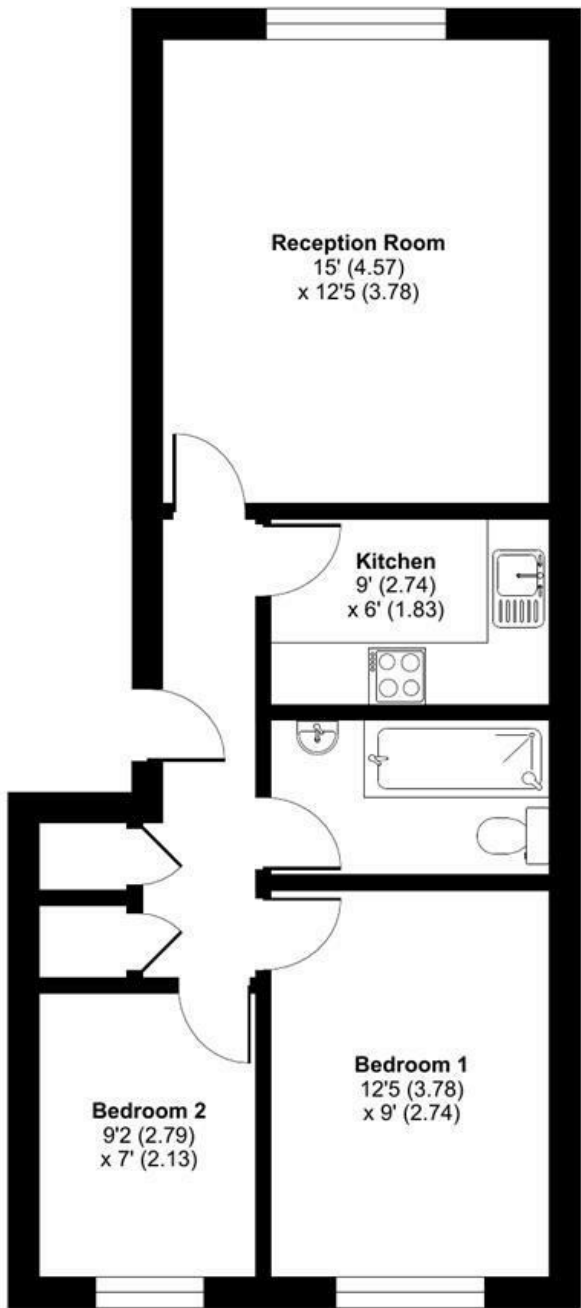
Alex & Matteo
 ESTATE AGENTS

£300,000

Rossetti Road, London, SE16

Approximate Area = 558 sq ft / 51.8 sq m

For identification only - Not to scale



GROUND FLOOR

Alex & Matteo
ESTATE AGENTS



Certified
Property
Measurer

Floor plan produced in accordance with RICS Property Measurement Standards incorporating International Property Measurement Standards (IPMS2 Residential). © nitchcom 2023. Produced for Alex & Matteo Estate Agents. REF: 1094101

